

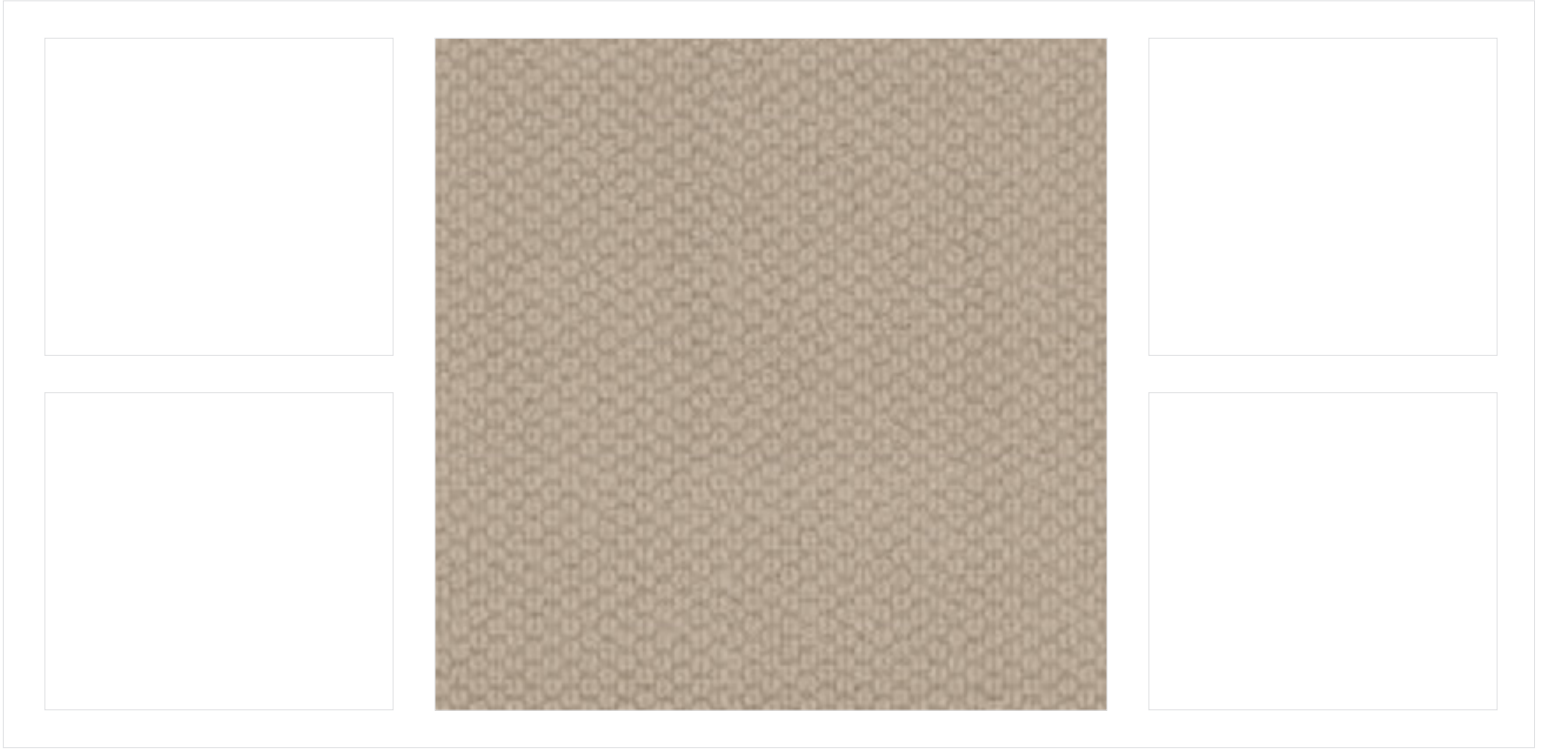
# **3025 BRYN MAWR FLOORING SELECTIONS**

PROJECT ADDRESS:  
3025 BRYN MAWR  
DALLAS, TEXAS, 75225



GENERAL NOTE: ALL DISCLAIMERS & GENERAL NOTES DESCRIBED ON PAGE #2 ON THIS DOCUMENT APPLY TO THIS SELECTION BY MANOLO DESIGN STUDIO.

<b>Manufacturer:</b>	By GC
<b>Collection:</b>	-
<b>Product Name:</b>	White Oak Plank
<b>Location(s):</b>	Main Floor, Stair Treads
<b>Description:</b>	Rustic white oak flooring
<b>Model Number:</b>	-
<b>Color   Finish:</b>	White Oak   Tobacco Honey Color - 3 sample stain colors provided on site
<b>Material   Size:</b>	White Oak   5"W
<b>Edge Profile:</b>	-
<b>Pattern:</b>	Reference Floor Finish Plan for directional layout and pattern
<b>Texture:</b>	-
<b>General Notes:</b>	-
<b>Vendor Contact:</b>	By GC
<b>More Information:</b>	building@manolodesignstudio.com



GENERAL NOTE: ALL DISCLAIMERS & GENERAL NOTES DESCRIBED ON PAGE #2 ON THIS DOCUMENT APPLY TO THIS SELECTION BY MANOLO DESIGN STUDIO.

<b>Manufacturer:</b>	Anderson
<b>Collection:</b>	Tuftex
<b>Product Name:</b>	Cathedral Hill II
<b>Location(s):</b>	Secondaries, Secondaries Closets, Bonus Room
<b>Description:</b>	Single color loop carpet
<b>Model Number:</b>	ZZ040
<b>Color   Finish:</b>	Feather - 00114
<b>Material   Size:</b>	100% Continuous Filament Nylon
<b>Edge Profile:</b>	Rolled Edge
<b>Pattern:</b>	-
<b>Texture:</b>	-
<b>General Notes:</b>	Carpet Pad - Future Foam Memory Foam, Scotchgard Supreme Memory Foam or Equivalent
<b>Vendor Contact:</b>	Jamie Robinson @ Prosource   jamier@prosourcetexas.com   214.742.3300
<b>More Information:</b>	building@manolodesignstudio.com



GENERAL NOTE: ALL DISCLAIMERS & GENERAL NOTES DESCRIBED ON PAGE #2 ON THIS DOCUMENT APPLY TO THIS SELECTION BY MANOLO DESIGN STUDIO.

<b>Manufacturer:</b>	M Bespoke   Materials Marketing
<b>Collection:</b>	Natural
<b>Product Name:</b>	Limestone
<b>Location(s):</b>	Entry Porch
<b>Description:</b>	-
<b>Model Number:</b>	-
<b>Color   Finish:</b>	Pewter   Honed Finish
<b>Material   Size:</b>	Limestone   16"x20"
<b>Edge Profile:</b>	-
<b>Pattern:</b>	1/3 Offset
<b>Texture:</b>	Honed
<b>General Notes:</b>	-
<b>Vendor Contact:</b>	-
<b>More Information:</b>	building@manolodesignstudio.com



GENERAL NOTE: ALL DISCLAIMERS & GENERAL NOTES DESCRIBED ON PAGE #2 ON THIS DOCUMENT APPLY TO THIS SELECTION BY MANOLO DESIGN STUDIO.

<b>Manufacturer:</b>	By GC
<b>Collection:</b>	-
<b>Product Name:</b>	-
<b>Location(s):</b>	Back Porch
<b>Description:</b>	-
<b>Model Number:</b>	-
<b>Color   Finish:</b>	Natural   Salted Finish
<b>Material   Size:</b>	Concrete
<b>Edge Profile:</b>	-
<b>Pattern:</b>	Slab
<b>Texture:</b>	-
<b>General Notes:</b>	-
<b>Vendor Contact:</b>	-
<b>More Information:</b>	building@manolodesignstudio.com